



Fast
renovation

Design Tile

The ceramic-look tile
for high traffic applications

Gerflor[®]

Design Tile

the flexible interlocking ceramic-look tile



Performance

- Resistance to Rolling traffic: suitable with pallet jack
- 7,8 mm thickness tile: durability and longevity
- PUR Treatment: Micro scratch resistance and easy maintenance



Designs

- Ceramic tile look
- Wide range of wood and stone designs



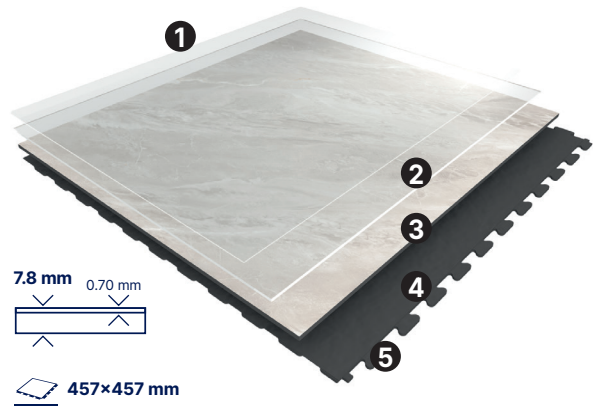
Easy Installation

- Adhesive Free Interlocking system: Easy to remove and reuse
- Renovation over ceramic
- Hidden dovetail join solution: seamless secure fit



Safety & Well being

- R10 Slip resistance
- Walking comfort



- 1. PUR surface treatment
- 2. Crystal wear layer & Structured emboss
- 3. High-definition printed film
- 4. Injection molded backing
- 5. Hidden, interlocking dove tail system

Renovation solution

for high traffic applications



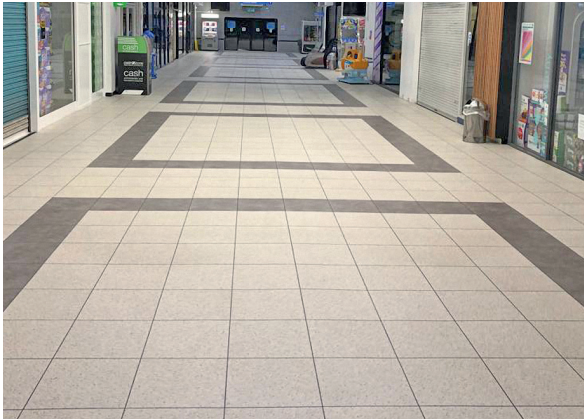
Supermarkets



Retail Shops

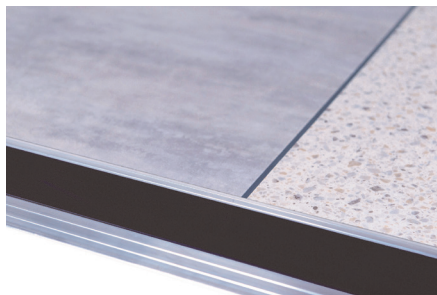


Convenience stores



Shopping centers

Do not forget the finishes!



Aluminum Ramp Profile (Screwed)
Width: 84mm / Gauge: 8mm / Length: 2.50m



Anti Bounce Mallet
5951



Entrance mat
1700 - Esplanade 9000

we care / we act



Recycling
100% recyclable
Up to 80% recycled content



Indoor Air Quality
TVOC < 100 micrograms / m³
No Formaldehyde



Reach
100% REACH compliant
Phthalate Free (except recycled content)
FREE of heavy metals
FREE of solvent



Wood designs

 457 x 457 mm



1550 Vintage Maple



1551 Vintage Sand



1552 Vintage Ash



1551 Vintage Sand




1552 Vintage Ash



1550 Vintage Maple

Terrazzo Design

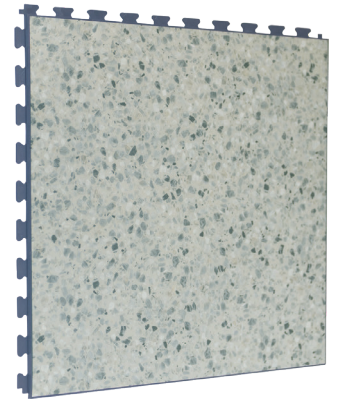
 457 x 457 mm



1554 Terrazzo Grey



1553 Terrazzo Cream



1554 Terrazzo Grey



1553 Terrazzo Cream



1549 Polished Concrete

Stone designs

 457 x 457 mm



1544 Shalestone / 1550 Vintage Mapple



1544 Shalestone / 1550 Vintage Mapple



1548 Limestone



1555 Sandstone



1544 Shalestone

Mineral Design

 457 x 457 mm



1546 Granite



1545 Clay



1546 Granite



1547 Volcano



1547 Volcano

Design Tile

Description

Total Thickness	EN ISO 24346	mm	7.8
Thickness of the wearlayer	EN ISO 24340	mm	0.70
Weight	EN ISO 23997	g/m ²	12 000
Size	EN ISO 24342	mm	457 /457
Number of planks per box / sqm per box	-	-	5 / 1.04 sqm

Classification

Norm/Product Specification	-	-	EN ISO 10582
European Classification	EN ISO 10874	Class	34-43
Fire Rating	EN 13501-1	Class	Bfl-s1
Static Electrical Propensity	EN 1815	kV	< 2
Slip Resistance Wet	EN 16165 app.B (DIN 51 130)	Class	R10

Performances

Wear Resistance	EN 660.2	mm ³	≤ 2.0
Wear Group	-	group	T
Type Binder content	ISO 10582	group	I
Curling	EN ISO 23999	mm	≤ 1
Dimensional stability (norm)	EN ISO 23999	%	≤ 0.15
Residual Indentation	EN ISO 24343-1	mm	≤ 0.05
Castor chair test	ISO 4918	-	OK
Shore hardness	EN ISO 868	H _o	> 60
Thermal Conductivity	EN ISO 10456	W/(m.k)	0.25
Colour Fastness	EN 20 105 - B02	degree	≥ 6
Surface Treatment	-	-	PUR+
Chemical Products Resistance ⁽¹⁾	EN ISO 26987	-	OK

Environment/Indoor Air Quality

TVOC after 28 days	ISO 16000-6	micrograms/m ³	<100
--------------------	-------------	---------------------------	------


CE Marking



EN 14041



(1) Regarding the resistance to chemicals, please download the corresponding leaflet from our website.

 The information contained in this document is valid from 01/06/2024 and is subject to change at any time without notice. In the context of constantly changing technology, our customers are responsible, prior to any use, for checking with us that this document is the version in force. Rubber leaves indelible stains on vinyl floorings: do not use mats with rubber backing and replace tubular furniture feet with those made of PVC or polyamide. Place mats of sufficient length at entrances to reduce outside sources of dirt.

We care / We act Our Commitments for a Sustainable future


CARBON FOOTPRINT*
 -20 % kg CO₂ equivalent/m² between 2020 and 2025


BIOSOURCED CONTENT**
 10 % by 2025


RECYCLED CONTENT
 30 % by 2025


ADHESIVE FREE***
 35 % by 2025


ANNUAL VOLUME RECYCLED
 60 000 t by 2025



* Scopes 1 and 2 defined in the GHG protocol ** % of activity with biosourced materials *** % of activity - adhesive free solution